











*WALL-PAPERS*  
*OLD AND NEW*



3400  
W21  
CHM

Wall-papers old and new



# WALL-PAPERS OLD AND NEW

Exclusive Designs



NANCY McCLELLAND, INC.  
15 East 57th Street, New York

Cooper - New York

The papers illustrated in this catalog are the exclusive property of Nancy McClelland, Inc., and are procurable at 15 East 57th Street, New York City.

In Boston they are displayed and sold through George J. Brewing, 420 Boylston Street.

In the following cities The Chintz Shop (Agnes Foster Wright) has the exclusive selling agency:

Philadelphia, 114 S. 20th Street.

Cincinnati, 1983 Madison Road.

St. Louis, 243 North Euclid Avenue.

Kansas City, 3718 Broadway.



## WALL-PAPERS, OLD AND NEW.

Nothing more useful in furnishing a room has ever been invented than decorative papers in good designs.

Papers that are backgrounds; papers that take the place of tapestries and painted decorations; papers that give the feeling of chintz or cretonne or toile de Jouy; Chinese papers that are purely fantasies—all these are possible to get today in the hand-blocked reproductions of the old designs that were so effectively used in decoration in the eighteenth and early nineteenth centuries. There is scarcely a room in the house for which a suitable paper is lacking, whether formality or informality is the purpose.

The art of using wall-paper properly is a special study. Some rooms will double in charm if they are only partially papered, instead of being covered from end to end with a design. The combination of wall-paper with wood-panelling is a delightful employment of this unpretentious material of decoration. Printed paper borders will often complete the rooms before anything else is placed in them, and bedrooms and bathrooms will always be gay and charming if the right papers are used. On the choice and the employment of the design, and on the color of the wood-trim and the ceiling, much depends.

The services and counsel of a staff of people experienced in the use of wall-paper is available at Nancy McClelland, Inc., together with an extensive selection of reproductions of old papers exclusive with this shop.

In addition to the large number of modern papers, which are made by hand, with the backgrounds painted in tempera just as old-time craftsmen used to make them, there is in this same shop a very large and important collection of the old scenic papers which were so highly prized by our grandparents as decorations of their houses.

These papers have been taken from the walls of old houses, and are still so fresh in coloring, and so well-conditioned (because they were made on pure linen paper) that they are ready to give additional centuries of service in the houses for

which they may be destined. In no other one place, either here or abroad, can so large and important a collection of old wall-papers be seen.

Please Note:—All of the papers shown in the catalog, with certain exceptions, which are noted, come in 8½ yard rolls. Many of them are suggested here in panels to indicate what combinations can be used, with borders and marbled papers.



*PETITES MAISONS—A LOUIS XVI DESIGN*

Background of soft pink or pale green. The small houses are in grisaille and the branches in tones of blue and green.

Width of design, 21¼".

Repeat, 21".

Price, \$10.00 a roll.



*PERSONNAGE ET OISEAU*

This paper has a ground color of pale café au lait with tan dots. The figures, trees, and birds are in sepia and green. The stripe is tan, and may be cut and used as a border.

This is a typical paper for a Colonial house.

Width of design, 19½".

Repeat, 21".

Price, \$10.00 a roll.

### L'OFFRANDE À CERES

This is a reproduction of a beautiful Directoire paper in tones of gray and sepia. The design is a draped napkin filled with fruit and leaves, interspersed with a small conventional pattern.

This paper is particularly suitable for use in a Colonial hallway or dining room, where the walls are to be neutral and the color is to be obtained in the curtains and the furniture coverings. Copper-color or yellow may be admirably used with it.

Width of design, 18".

Repeat, 19".

Price, \$6.00 a roll.





### COLINETTE

This is a paper with Georgian feeling, which may be had in sepia on a cream ground, in tones of gray on gray ground with mauve medallions, or in tones of gray on pale blue ground with yellow medallions.

A particularly useful design for a large hallway.

Width of design, 18".

Repeat, 31".

Price, \$12.00 a roll in gray and blue, and \$10.00 a roll in sepia.

*LE BOSQUET DE JUNON*

A Colonial design on a gray ground  
The draperies are blue, the peacock and  
hedge are green, and the flowers are  
tones of rose.

Width of design, 21".

Repeat, 34".

Price, \$8.00 a roll.





*LE BAL DE SCEAUX—Directoire design.*

Printed in turquoise blue on white, gray on gray, or sepia on yellow.

Width of design, 18½". Repeat, 31". Price, \$6.00 a roll.



*L'ÉCUREUIL*

A paper that takes its name from the squirrel sitting on the branches.

Rose on cream ground, or mulberry on pale greenish ground.

A good background paper, which allows the use of pictures in the room.

Width of design, 21".

Repeat, 19".

Price, \$6.00 a roll.





*LA COLONNADE—Reproduction of a Louis XV design.*  
Pale gray-green or beige background, the flowers in shades of  
rose.

Width of design,  $23\frac{1}{4}$ ". Repeat, 24". Price, \$8.00 a roll.



*LES CYGNES—A toile de Jouy design.*

Rose-pink or yellow background with white swans and flowers,  
and green foliage.

Width of design, 21". Repeat, 21". Price, \$8.00 a roll.



*LE CANARD*

A small design for a bathroom or dressing-room. Pale yellow ground with mauve and turquoise canards and urns in medallions.

Width of design, 19".

Repeat, 18½".

Price, \$6.00 a roll.

*LA PLUME DE PAON*

Pale yellow or apricot ground with  
feathers in green-blue, and cupids in  
mauve.

Width of design, 19½".

Repeat, 10½".

Price, \$8.00 a roll.





*GRENADE—Reproduction of a Louis XVI design.*

Background of French blue, yellow or white; flowers and fruit  
in apricot and blue, with brown stems.

Width of design,  $21\frac{3}{4}$ ". Repeat, 16". Price, \$6.00 a roll.



*LE FAUNE—Reproduction of a Directoire paper.*

Background of soft apricot color printed with designs in sepia, green-blue and cream.

Width of design,  $18\frac{1}{4}$ ".

Repeat,  $18\frac{1}{2}$ ".

Price, \$8.00 a roll.



*AMPHORE ET MAI*

A formal design, ashes-of-roses ground with deeper rose vases and flowers and two shades of green in the leaves.

Width of design, 21".

Repeat, 21".

Price, \$10.00 a roll.



*FLEURS COUPÉES*

A delightful bedroom paper with pale blue or pink ground, and flowers in white, dark blue, rose and yellow.

Width of design, 21".

Repeat, 21".

Price, \$8.00 a roll.





*NID D'OISEAU*

A green and white paper that is fresh and spring-like, covered with bouquets of roses and designs of birds.

Width of design, 18½".

Repeat, 23".

Price, \$6.00 a roll.

*EMPIRE PERSONNAGE*

One of the small medallion designs so much used in Colonial times. Green on pink, or ochre on blue.

Width of design, 18½".

Repeat, 19".

Price, \$8.00 a roll.





*LA LANTERNE MAGIQUE—Reproduction of a Louis XVI  
paper.*

Background of gray-green or pinkish mauve, with figures in  
sepia, yellow and white, and flowers in shades of rose and white.

Width of design, 19 $\frac{1}{8}$ ". Repeat, 21". Price, \$8.00 a roll.



*LES CLOCHETTES—Reproduction of a Louis XVI paper.*

Apricot or pale green background, with flowers in rose, blue and yellow, and green leaves.

Width of design, 21". Repeat, 22". Price, \$8.00 a roll.



*INDIEN—Paper to imitate printed Eastern fabrics.*

Dark brown ground with designs in brilliant yellow, beige, Indian red and green, or cream ground with pale yellow, pale pink and green designs.

Width of design, 18¼".

Repeat, 14".

Price, \$8.00 a roll.



*PALMIERS ET BOUQUETS—A toile de Jouy design, with a  
Chinaman fishing under a palm tree.*

Background of gray or French blue, figures in sepia and cream.  
Flowers in shades of rose and green.

Width of design, 21". Repeat, 21". Price, \$8.00 a roll.



### TEMPLE DE L'AMOUR

An old toile de Jouy design which is reproduced in this paper on a blue ground, with tracteries of white, and designs in mulberry.

Width of design, 21".

Repeat, 21".

Price, \$8.00 a roll.



*PERDRIX ET LYS*

Taken from a design on painted silk  
by Philippe de la Salle.

The original background is French  
blue with designs in apricot, tilleul, blue,  
rose, and brown.

It may also be had on a jonquil yellow  
ground.

Width of design, 21".

Repeat, 44".

Price, \$10.00 a roll.





*PETIT CHINOIS—Reproduction of a Louis XVI design.*

Background turquoise blue. Flowers and figures in shades of rose, dark blue, violet, green, brown and orange-vermilion. An excellent paper for a Colonial house.

Width of design, 21". Repeat, 21". Price, \$10.00 a roll.

*ÉGLANTIER*

A good screen paper, with a large, bold design and effective coloring. The ground is mustard yellow, with flowers in blue, rose, and mauve.

Width of design, 22½".

Repeat, 39".

Price, \$10.00 a roll.





*CHINOIS ET VASE*

A beautiful Chinese design in two shades of green and brown, on a gray ground.

Width of design, 20".

Repeat, 42".

Price, \$10.00 a roll.

*LA CAGE*

An all-over design, excellent for Italian rooms. The design is in green and ochre on a cream ground.

Width of design, 18¼".

Repeat, 22".

Price, \$8.00 a roll.





*PILLEMENT*

Made with delicate flower and leaf designs on gray-green or pale blue ground, a good deal of rose in the flowers.

Width of design, 21".

Repeat, 21".

Price, \$8.00 a roll.

*BOUQUET ET AQUEDUC*

On robin's-egg blue, pale yellow or white, with gay flowers in rose, mauve, and yellow with green and brown leaves.

The effect on the wall is that of toile.

Width of design, 23".

Repeat. 31".

Price, \$10.00 a roll.





*BOUQUET ET GRANDE  
RAYURE*

This paper, when varnished, gives the effect of painted canvas. The garlanded stripe may be cut and used as a border, and also makes good cornice boards.

The ground color is blue, which changes to green when shellacked, and the flowers are warm, rich tones.

Width of design, 22".

Repeat, 42".

Price, \$10.00 a roll.



*FABLES DE LA FONTAINE*

Reproduction of an old design in the  
Musée des Arts Decoratifs.

Oyster white ground with French blue  
medallions, and touches of orange,  
mauve, and green.

Width of design, 18¼".

Repeat, 21".

Price, \$8.00 a roll.





SPANISH AND ITALIAN  
DESIGNS

In order to have papers suitable for Spanish and Italian houses, the designs of old brocades have been reproduced in wall-paper:

*DAMAS CHOISY*

Pale green or terra-cotta ground with design in dark brown.

Width of design, 22".

Repeat, 37".

Price, \$6.00 a roll.

SPANISH AND ITALIAN  
DESIGNS

*DAMAS UTRECHT*

Pale yellow ground with design in  
tobacco brown.

Width of design, 18 $\frac{3}{4}$ ".

Repeat, 33".

Price, \$8.00 a roll.





SPANISH AND ITALIAN  
DESIGNS

*FLAMAND*

Reproduction of a leather design, done  
in ochre color on a yellow ground.

Width of design, 18 $\frac{1}{4}$ ".

Repeat, 20".

Price, \$8.00 a roll.

SPANISH AND ITALIAN  
DESIGNS



*DAMAS ESPAGNOL*

A vivid and beautiful design in cerise  
and yellow.

Width of design,  $18\frac{1}{2}$ ".

Repeat,  $23\frac{1}{4}$ ".

Price, \$10.00 a roll.



*VASE ET BOUQUET*

Reproduction of a Louis XVI design.  
Pale blue, pale green or puce color  
ground, with flowers in color.

Width of design, 23".

Repeat, 21½".

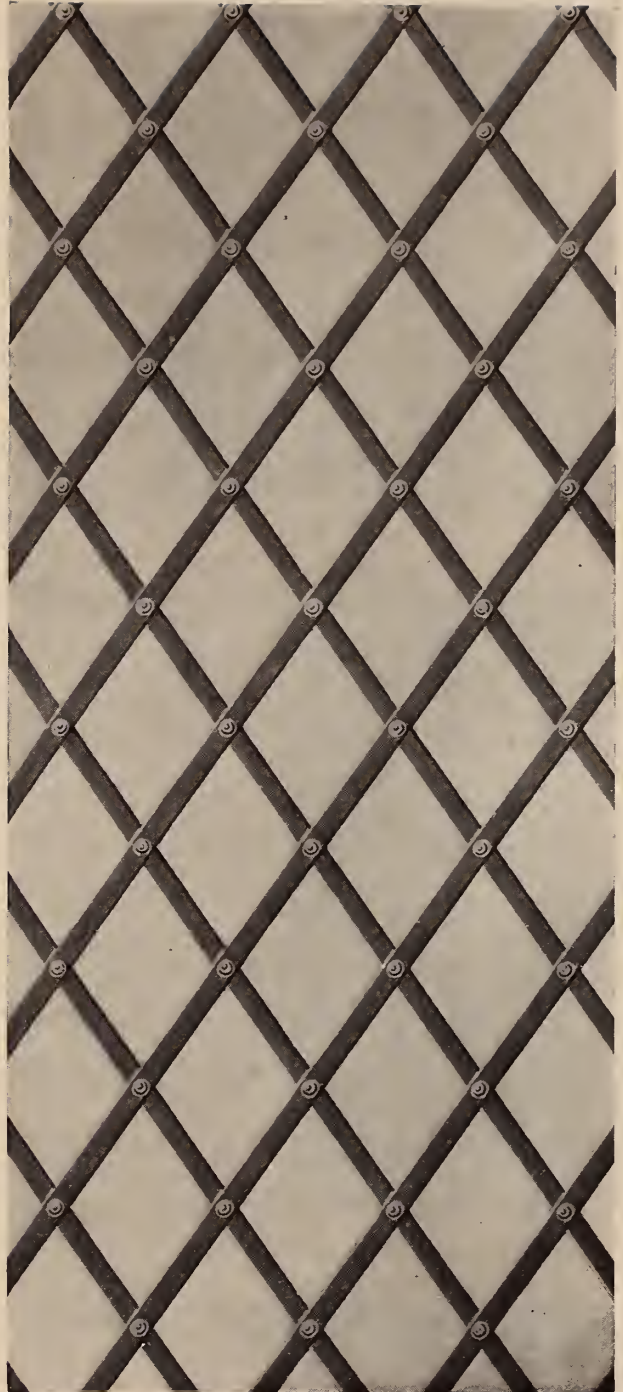
Price, \$8.00 a roll.

*TREILLAGE*

A useful lattice design in green on a gray ground.

Width of paper, 18½".

Price, \$6.00 a roll.





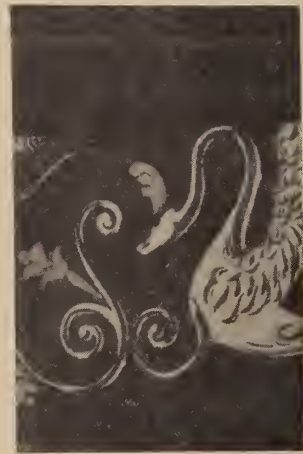
No. 92



No. 91



No. 106



No. 458



No. 93

No. 438



No. 105



No. 377

No. 378

No. 379

No. 380



- No. 91—Frieze, mauve ground. Urns and swags in gray. Copied from Palace of Malmaison. Width, 9"; price, \$1.00 per yard.
- No. 92—Frieze, powder-blue ground, with mauve and black; width, 9½"; price, \$1.00 per yard.
- No. 93—Border, blue ground with salmon, mauve, green, and black; width, 3¼"; price, 50c. per yard.
- No. 105—Border, black ground with green, blue, mauve, and salmon; width, 3"; price, 50c. per yard.
- No. 106—Frieze, yellow ground with figures and urns in gray; width, 10½"; price, \$1.00 per yard.
- No. 377—Border, deep maroon ground with green and red; width, 3½"; price, 50c. per yard.
- No. 378—Border, yellow ground; width, 3½"; price, 50c. per yard.
- No. 379—Border, pink ground; width, 3½"; price, 50c. per yard.
- No. 380—Border, blue ground; width, 3½"; price, 50c. per yard.
- No. 438—Border, mauve ground with yellow and rose, width, 3¼"; price, 50c. per yard.
- No. 458—Frieze, mauve ground with decorations in blue, yellow, and pink; width 8"; price, \$1.00 per yard.

- No. 15—Border, gray; width,  $2\frac{1}{2}$ " ; price, 20c. per yard.
- No. 54—Border, blue and white; width, 2" ; price, 25c. per yard.
- No. 55—Border, gray; width,  $2\frac{1}{2}$ " ; price, 30c. per yard.
- No. 56—Border, gray and green; width,  $2\frac{1}{2}$ " ; price, 50c. per yard.
- No. 57—Border, green and mauve; width,  $1\frac{5}{8}$ " ; price, 25c. per yard.
- No. 58—Border, dark green; width,  $1\frac{1}{4}$ " ; price, 25c. per yard.
- No. 83—Border, gray; width,  $1\frac{5}{8}$ " ; price, 25c. per yard.
- No. 84—Border, gray; width,  $1\frac{3}{4}$ " ; price, 50c. per yard.
- No. 86—Border, gray; width,  $\frac{7}{8}$ " ; price, 25c. per yard.
- No. 87—Border, gray; width,  $1\frac{5}{8}$ " ; price, 25c. per yard.
- No. 88—Border, gray; width,  $1\frac{5}{8}$ " ; price, 25c. per yard.
- No. 96—Border, gray; width,  $1\frac{5}{8}$ " ; price, 50c. per yard.
- No. 97—Border, red and blue; width, 2" ; price, 25c. per yard.
- No. 98—Border, cream, green, and brown; width,  $1\frac{7}{8}$ " ; price, 25c. per yard.
- No. 101—Border, cerise and gray; width, 1" ; price, 25c. per yard.
- No. 102—Border, blue and gray; width, 1" ; price, 25c. per yard.
- No. 103—Cornice, gray; width, 5" ; price, 75c. per yard.
- No. 109—Border, pink; width,  $2\frac{1}{2}$ " ; price, 50c. per yard.
- No. 235—Border, sepia; width,  $1\frac{1}{2}$ " ; price, 25c. per yard.
- No. 243—Border, green, pink, and rose; width,  $1\frac{1}{2}$ " ; price, 25c. per yard.
- No. 257—Border, brown and gray; width, 1" ; price, 25c. per yard.
- No. 274—Border, green ground with cream and black; width,  $2\frac{3}{4}$ " ; price, 25c. per yard.
- No. 276—Border, gold; width,  $\frac{7}{8}$ " ; price, 25c. per yard.
- No. 344—Border, gold; width,  $1\frac{7}{8}$ " ; price, 50c. per yard.
- No. 375—Border, yellow ground with brown; width,  $2\frac{3}{4}$ " ; price, 50c. per yard.
- No. 376—Border, mauve ground, with gray and black; width,  $2\frac{3}{4}$ " ; price, 50c. per yard.
- No. 381—Border, blue and gray; width,  $1\frac{1}{4}$ " ; price, 25c. per yard.
- No. 382—Border, brown and gray; width,  $1\frac{1}{4}$ " ; price, 25c. per yard.
- No. 383—Border, rose and blue; width,  $1\frac{1}{4}$ " ; price, 25c. per yard.
- No. 457—Border, cream, red, and blue; width,  $1\frac{5}{8}$ " ; price, 25c. per yard.
- No. 461—Border, tan ground with blue and red; width, 3" ; price, 50c. per yard.
- No. 462—Border, yellow ground with mauve and green; width, 3" ; price, 50c. per yard.
- No. 463—Border, yellow ground with red and green; width,  $2\frac{3}{4}$ " ; price, 50c. per yard.



No. 381  
No. 382  
No. 383



No. 101  
No. 102  
No. 257



No. 84



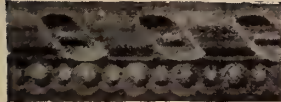
No. 88



No. 83



No. 235



No. 96



No. 15



No. 86



No. 87



No. 103



No. 276



No. 54  
No. 97



No. 55  
No. 56  
No. 109



No. 57



No. 457



No. 344



No. 58



No. 243



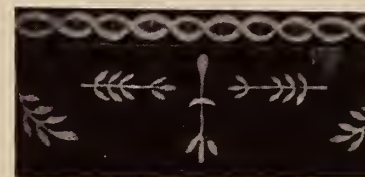
No. 98



No. 375  
No. 376  
No. 463



No. 461  
No. 462



No. 274



*LES AMUSEMENTS CHINOIS*

A paper made in sheets. The design is 49½" long by 20½" wide, and colored by hand. Brilliant colors that may be glazed with great success.

Price, \$6.00 a sheet.



*LA JEUNESSE DE LA JOURNÉE*

Reproduction of an early French Chinoiserie wall-paper in sheets, colored by hand. The design is 41½" high and 21" wide, done in brilliant Chinese colors on a cream ground.

This paper is particularly adapted to glazing.

Price, \$6.00 a sheet.





*A WALL-PAPER DECORATION CALLED  
"PANNEAUX ÉTRUSQUES".*

The large panel and two pilasters on the opposite page, and the overdoor on this page form a delightful decoration for a room.

The ground is blue-green.

Large panel—height, 5' 4"; width, 2'  $\frac{3}{4}$ "; price, \$15.00 each.

Pilasters—height, 5' 4"; width, 12"; price, \$9.00 each.

Overdoors—height, 1' 8"; width, 1' 11"; price, \$6.50 each.



*CHINESE GARDENS*

Printed in gold on green, lacquer red, blue, or black. Set of 10 panels.

Four large size panels, in 4 different designs (64" high x 44" wide) \$18.00 each.

Four narrow panels, in two different designs (64" high x 22" wide) \$10.00 each.

Two overdoors (two designs), 33" high x 44" wide, \$6.50 each.

Price, \$125.00 set.



*BERGER ET BERGÈRE*

A reproduction of a Louis XVI paper in tones of gray and white. The trees, swags, and centers of flowers are in olive green.

It is particularly adapted to American country houses.

Width of design, 19".

Repeat, 38".

Price, \$8.00 a roll.



## THE PALAIS ROYAL

A reproduction of an old scenic paper of the early 1800's, the original of which still exists in one or two Colonial houses in New England. The background of the paper is a deep sky blue. Against it are architectural scenes, viewed through flowered arches, printed in gray and sepia. The brick wall that forms the base of the paper was occasionally used as a dado in early low-ceilinged rooms.

Scenic papers of this sort were the means of bringing gayety and color into the stiff New England houses. Our ancestors discovered that a room whose walls were decorated with scenic paper was already largely furnished before anything else was put into it. The color and the movement of the varied scenes added interest to the surroundings.

A scenic paper should always be hung above a chair-rail in order to lift the scenes above the line of the furniture. In rooms where there are few high pieces of furniture, such papers are particularly desirable as mural decorations.

The modern method of applying scenic papers to walls is first to canvas the wall, next to cover the canvas with lining paper, and lastly to apply the scenic paper. By this means the paper is protected and is removable at will.

The blocks of the Palais Royal have recently been cut from the designs of the old paper, and the modern reproduction is perfect in color and pattern when compared with the original set.

The design of the arches and their perspective makes this paper particularly suitable for corridors, foyer halls, breakfast and garden rooms.



*THE PALAIS ROYAL SCENIC PAPER*

There are 30 strips in the complete set. The height of each strip is 10' 6". Height of design 7' 3½". Width of design on each strip 19".

The set of 30 strips covers 47½ linear feet of wall space.

The price is \$450 a set.

Single strips, \$18.75 each.



### AMOUR AVEUGLE

A reproduction of a Directoire paper and border. The paper is in grisaille, and the border is tinted. The flowers and fringe are pink, the leaves and water-lily moulding green, and the drapery and corbels are white.

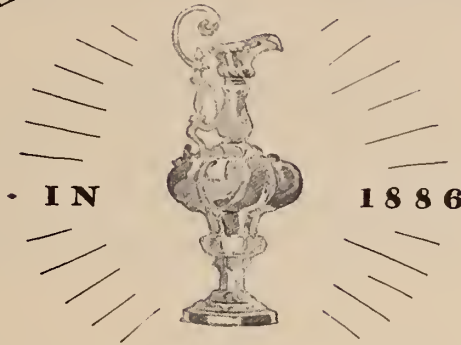
Width of design, in paper, 19".

Repeat, 25".

Price, \$12.00 a roll.

The frise is 11½" wide, and the border is 7" wide. Price of frise and border is \$2.50 per yard.

DEFENDING THE CUP



## A Glazed Chintz tells fascinating story

SEPTEMBER 7TH, 1886.

The "Mayflower" was defending the "America's" cup against the British yacht, "Galatea."

Not since the swift sailing "America"—first racing yacht to cross the Atlantic in either direction—brought the cup back from England in 1851, had yachting enthusiasm been more keen.

How the "Mayflower" won the series, slipping across the finish line within only eleven minutes of the specified time, is yachting history now.

This fascinating incident was celebrated at the time by the production of a printed percale.

An original piece of the percale is owned by Schumacher and it has been faithfully reproduced in this glazed chintz.

In small medallions each boat is shown, and in a larger oval, surrounded by the pennants of the two boats, a view of the race. Above it, the cup itself—the "America's" cup. Corals, shells and seaweed complete the design.

Because of the unusual quality of its glazing, this chintz is particularly adaptable for draperies, as well as for slip covers and pillows. And it



This reproduction of a percale printed to celebrate "The Mayflower's" victory over the "Galatea," comes in green, blue, buff, brown and mouse.

comes in a wide variety of color combinations.

The Yacht Race Chintz is only one of the many new and charming designs presented by Schumacher in hand-blocked and printed linens, chintzes and toiles de Jouy, damasks, brocades, brocatelles, velvets, tapestries, satins and taffetas.

These fabrics may be seen by arrangement with your decorator, upholsterer, or the decorating service of your department store. Samples specially selected to fit your particular requirements can be promptly secured by them.

*"Your Home and the Interior Decorator"*

How you can, without additional expense, have the professional services of an interior decorator, is explained in our free booklet, *"Your Home and the Interior Decorator."*

Richly illustrated in full color, it will be sent to you upon request without charge. Write to F. Schumacher & Co., Dept. R-11, 60 West 40th Street, New York. Importers, Manufacturers and Distributors to the trade only, of Decorative Drapery and Upholstery Fabrics. Offices also in Boston, Chicago, Philadelphia, Los Angeles, San Francisco

F-SCHUMACHER & CO.

# HARRIMAN NATIONAL BANK

Fifth Avenue and 44th Street

NEW YORK

---

THE HARRIMAN NATIONAL BANK is characterized by its accessible location in the Terminal Zone, "the new financial and commercial center of New York," its extended hours of business, a thoroughly modern banking policy adapted to commercial as well as personal needs, and particularly efficient and attentive services. Foreign Department issues foreign and domestic letters of credit and transacts business all over the world. Trust Department serves in every fiduciary capacity. Security Department offers sound and conservative investments. Separate Department of Women's Accounts elaborately equipped. Safe Deposit Vaults.

---

*Banking Hours from 8 o'clock A. M. to 8 o'clock P. M.  
Safe Deposit Vaults open from 8 o'clock A. M. to Midnight*



LIGHTING FIXTURES  
TABLE AND FLOOR LAMPS  
METAL ORNAMENTS

STERLING BRONZE CO., INC.

18 EAST 40th STREET

NEW YORK



MISS TONY VON HORN  
PHOTOGRAPHIC STUDIO  
Portraits and Pictorial Views of Homes and Gardens  
*Telephone Circle 8695*  
18 WEST 50th STREET · NEW YORK



# And what shall complete the boudoir setting?



**N**OT a difficult question if you put it up to Hale's.

Bring us a square of the wallcovering you choose for your new bed-room and we shall be most happy to prescribe furniture and accessories to blend into the colorful, harmonious picture.

Hale's own colors and designs, executed exclusively for this shop by The Simmons Company, usually offer sufficient range to meet exacting requirements. However, when occasion demands, any Simmons bed may be custom finished in whatever shade or pattern is desired.

Do stop in, if only to browse about. Friends from Park Avenue tell us that Hale's is the loveliest spot in all New York.

## HALE'S

420 MADISON AVENUE  
NEW YORK CITY

*Also:*

1006 BROAD STREET  
NEWARK



# THE CHINTZ SHOP

AGNES FOSTER WRIGHT

All Chintzes, Linens, and Cretonnes in the market may be obtained at our shops; including exclusive designs of our own import not to be found elsewhere. We make curtains, slip-covers, and upholstered furniture.

NEW YORK CITY  
431 Madison Ave.

CINCINNATI  
1983 Madison Road

KANSAS CITY  
3718 Broadway

PHILADELPHIA  
114 So. 20th St.

ST. LOUIS  
243 No. Euclid Ave.

BARNSTABLE  
On Cape Cod

Sole Agents for Nancy McClelland's Wall Papers.



# THE CONSOLIDATED TRIMMING COMPANY

SERVICE TO THE TRADE

That is on a national scale and comprises the highest type of special order work and an unsurpassed stock of

Distinctive and Decorative Upholstery,  
Drapery and Lamp Shade  
Trimmings

Tassels, Edgings, Cords, Fringes, Loops, Metal Galloons, Ropes, Borders,  
Metal Fringes and Gimps, Lamp Shade Trimmings

27-33 West 23d Street  
New York

New Phone Numbers: Gramercy 3640, 3641, 3642, 3643, 3644, 3645

---

BRANCH OFFICES: Boston: A. H. Abels, 420 Boylston St.; San Francisco: Charles Prins, 251 Post St.; Cleveland: A. J. Raine, 2063 E. 4th St., Room 209; Chicago: Alfred Cohn, 1510 Heyworth Bldg.; Los Angeles: Consolidated Trimming Co., 716-722 So. Los Angeles St.; Canada: P. J. Le May, Mount Royal Hotel, Montreal; Philadelphia: E. H. Ringgold, Jr., 12th and Brown Sts.



## JOHN SIEDENTOP, Inc.

Announcing the opening of their new Showrooms

403-5 East 62d Street, New York—Telephone, Regent 0100

In our new building, here, we have combined our WORK ROOMS, SHOW ROOMS and GENERAL OFFICES—planned and equipped in the most modern way for the making of

### Upholstered Furniture, Upholstery and Hangings

For the Trade

- Showroom display of numerous exclusive Models in all styles, modern and Period.  
ASSOCIATED DISPLAY of Furniture for all requirements of the Home or Important Public Buildings.

MANUFACTURED BY JOHN HELMSKY, INC.



# Mrs. Franklin INC.

*Introduces an original hand knitted suit in a rich shade of fuchsia combined with anemone, to be worn with a matching scarf. Also an exclusive collection of hats, frocks and accessories. Visit our New York Shop which is at 16 East 53rd Street.*

*All genuine Franklin hand knitted*



*sweater suits bear this label.*

**NEW YORK** ..... **PHILADELPHIA** ..... **PALM BEACH** ..... **BAR HARBOR**



# MICHAELYAN RUGS

reflect the present tendencies in decorative schemes. That is the reason why outstanding decorators all over the country have displayed a preference to do their rug shopping at my show rooms, where every season new color combinations are introduced into rugs especially woven for me in the Orient.

The Department of Antiques brings the charm of the centuries in representative specimens of Ispahans, Koubas, Oushaks, Prayer Rugs, and in specimens of later types, such as Fereghans, Lavehrs, etc.

H. MICHAELYAN

(Established 1901)

20 West 47th Street  
New York City

Michaelyan Galleries  
Palm Beach, Fla.



THE RIGHT PICTURE FOR A SPECIAL PLACE

can be chosen from the work of

AMERICAN ARTISTS

If it is not in our collection, our experience of thirty-six years devoted to American Art will enable us to find it.

**MACBETH GALLERY**

15 EAST 57<sup>TH</sup> STREET

NEW YORK CITY

(Floor below Nancy McClelland, Inc.)



WALL PAPERS  
PAINTED DECORATIONS



JAMES B. WILSON

14 SUTTON PLACE  
NEW YORK CITY

HOUSE & DECORATIVE PAINTER

*Specialist in*

REMOVING, RESTORING, HANGING  
ANTIQUÉ AND NEW PAPERS  
OIL PAINTINGS AND LACQUERS







FRANK EATON NEWMAN - *Architect*

W. S. FITZ RANDOLPH, Inc.

BUILDERS

*Specializing in the Construction of Country Homes of Distinction*

TUXEDO PARK, NEW YORK  
1328 BROADWAY, NEW YORK CITY

Modern Method of  
Shipping Household Effects  
for  
Inland or Foreign  
Removals



Storing Household Effects  
Exclusively  
Including  
Packing and Forwarding

## BOWLING GREEN STORAGE & VAN CO.

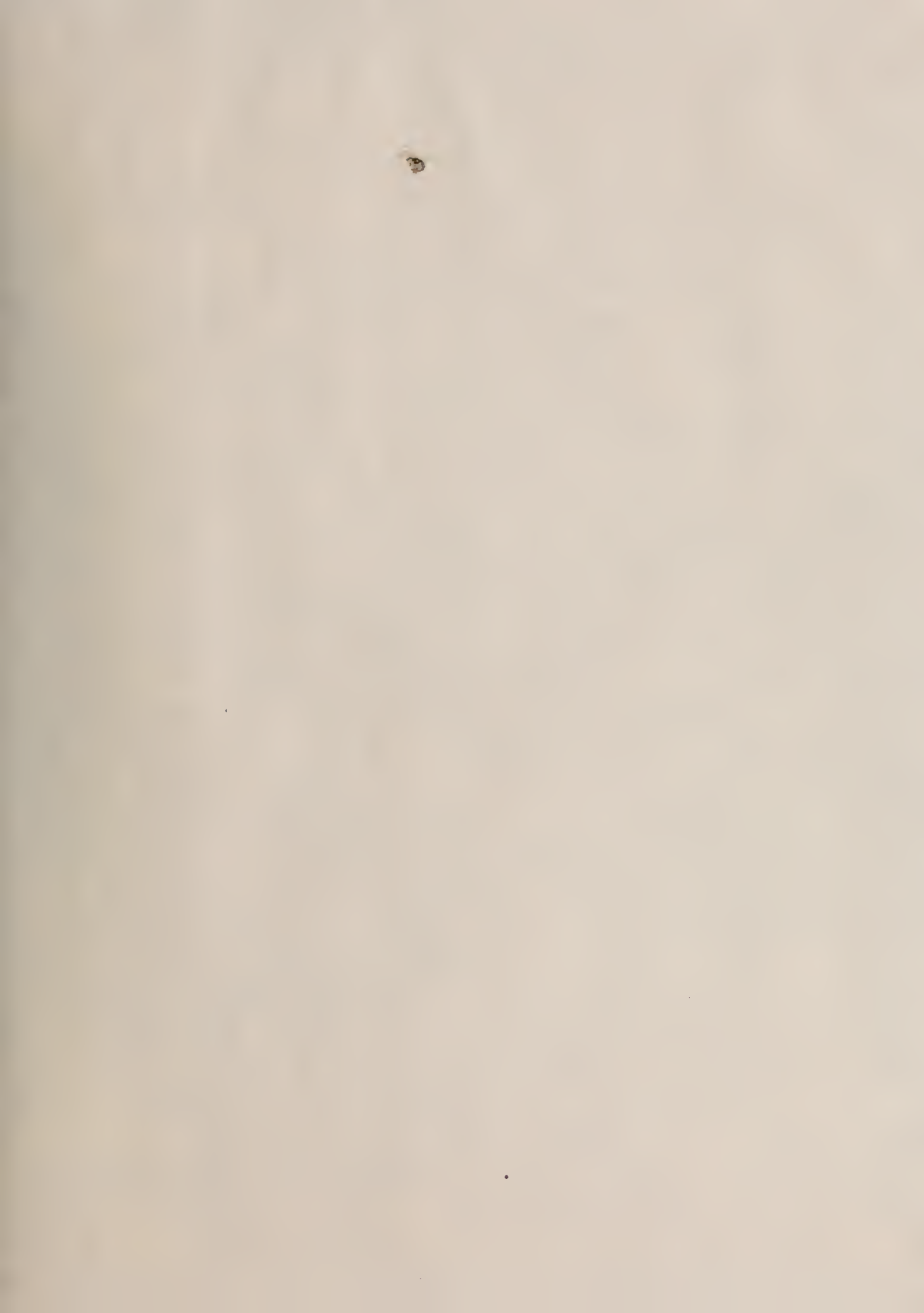
OFFICE: 8-10 BRIDGE STREET  
WAREHOUSE: 250 WEST 65th STREET  
NEW YORK CITY

[ 68 ]

*Published by*  
POWELSON, CHURCH, INC.  
247 Park Avenue, New York City











SMITHSONIAN INSTITUTION LIBRARIES



3 9088 00062 0120